

NHS Grampian Anchor Interior Design Strategy

Contents

1.0 Interiors Concept

Traditional Domestic	36
Contemporary Hospitality	37
Modern Clinical	38

2.0 Interiors Strategy

Lower Ground Floor	39
Ground Floor	40
First Floor	41

3.0 Wayfinding Strategy

Lower Ground Floor	42
Ground Floor	43
First Floor	44

4.0 Colour Strategy & Material Palettes

Overall Strategy	45
Neutral Palette	46
Traditional Domestic	47
Contemporary Hospitality	48
Modern Clinical	49

5.0 Wayfinding & Artwork Palette

Overall Strategy	50
Ground Floor	51
First Floor	52

6.0 Kit of Parts

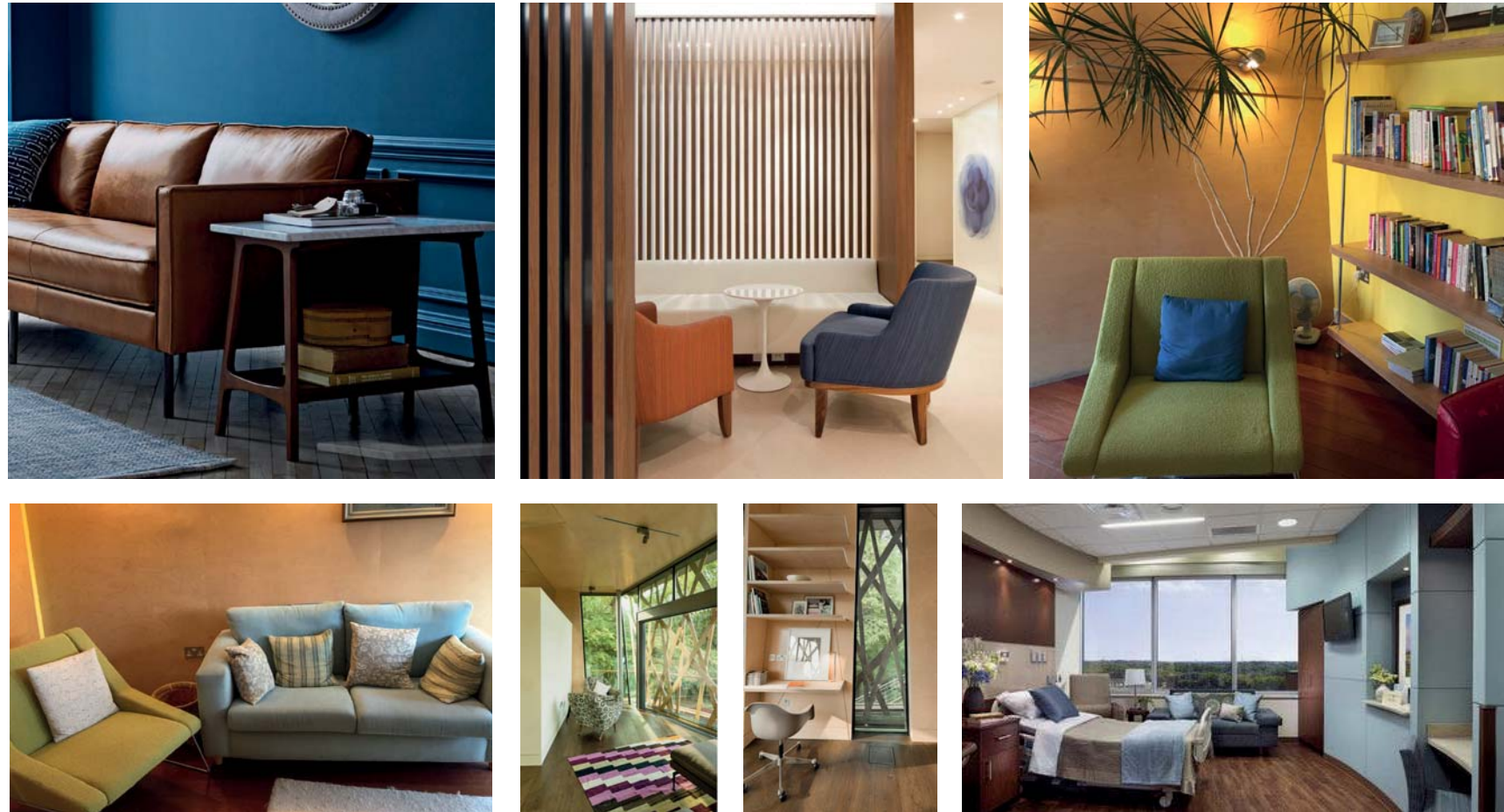
DDA Compliance	53
----------------	----

7.0 Appendix

Floor Finishes	54
Joinery Finishes	55
Wall Finishes	56

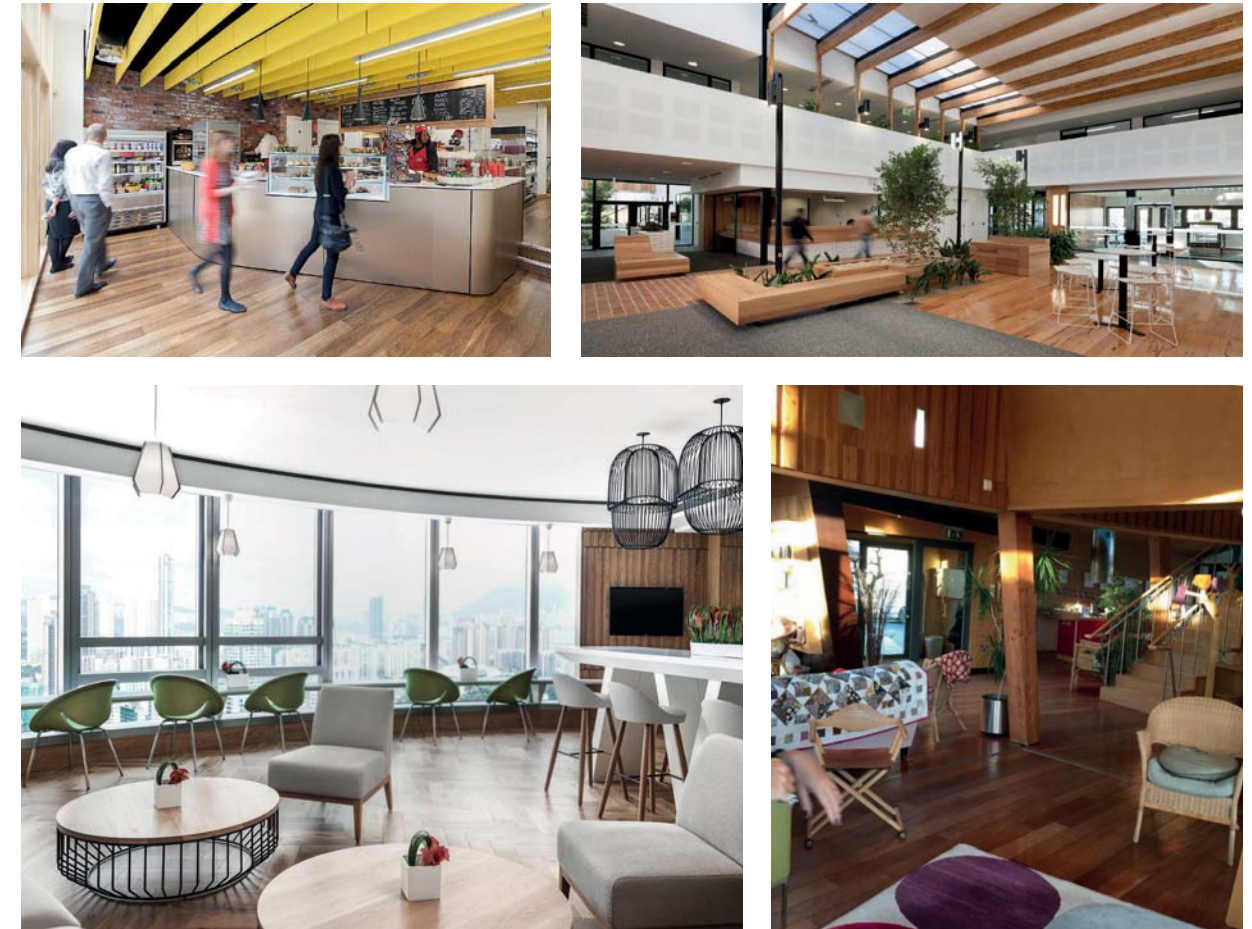
1.0 Interiors Concept

Personal space



Overall impression is domestic and traditional with a wide variety of textures, soft tones and natural motifs

Public space



A mix of finishes with lots of timber surfaces and eclectic furniture

Materials Palette



Traditional patterns, warm and rich colour ways

Artwork



Homely pictures and patterns with playful lighting
Local references in artwork

Connection to Outdoor Space



Informal and intimate, reminiscent of home
Cosy garden full of varied textures and forms to experience

1.0 Interiors Concept

Personal space



Overall impression is of a smart and comfortable hotel with bold and fresh tones

Public space



Consistent contemporary finishes and furniture, with warmth added by touches of timber

Materials Palette



Geometric patterns and sophisticated but lively colour ways, avoiding primary colours

Artwork



Abstract pictures and patterns with geometric lighting

Connection to Outdoor Space



Relaxed and smart social space, easy access to outdoor areas

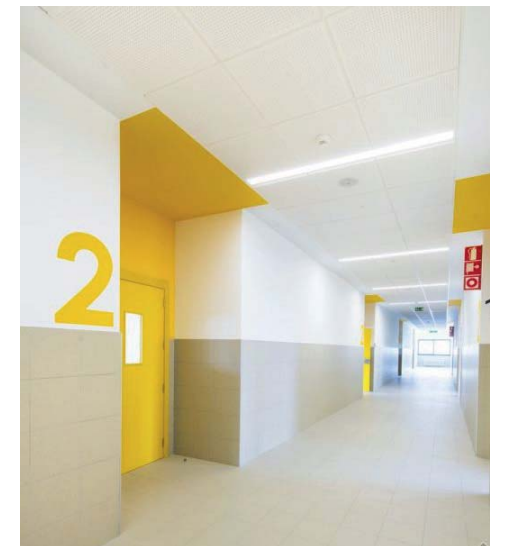
1.0 Interiors Concept

Personal space



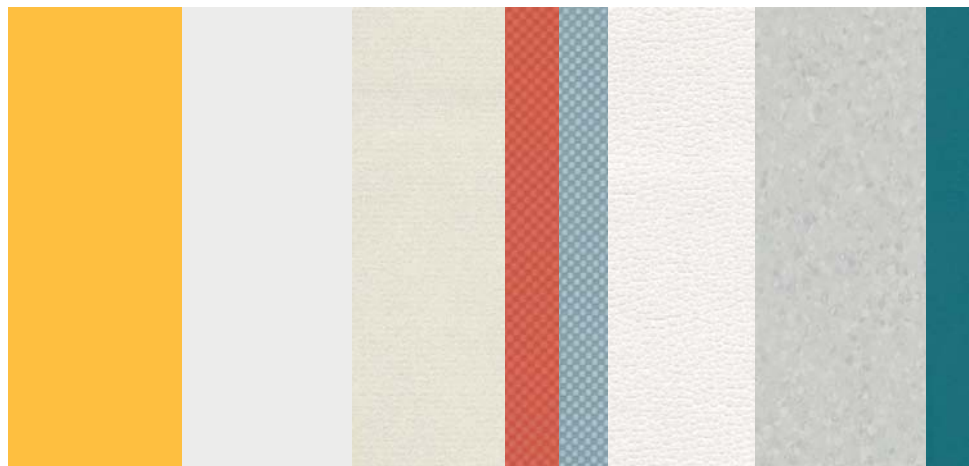
Overall impression is modern with the majority of surfaces being white and colour used as an accent

Public space



Crisp minimal design with splashes of colour on furniture and signage

Materials Palette



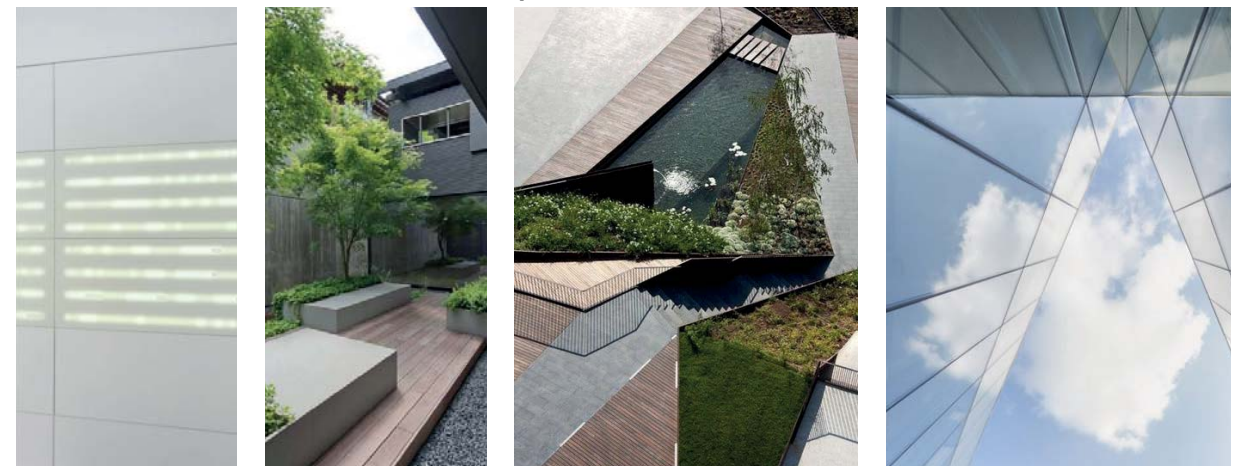
Primary or bold pastel colours used to lift a neutral or white base scheme

Artwork

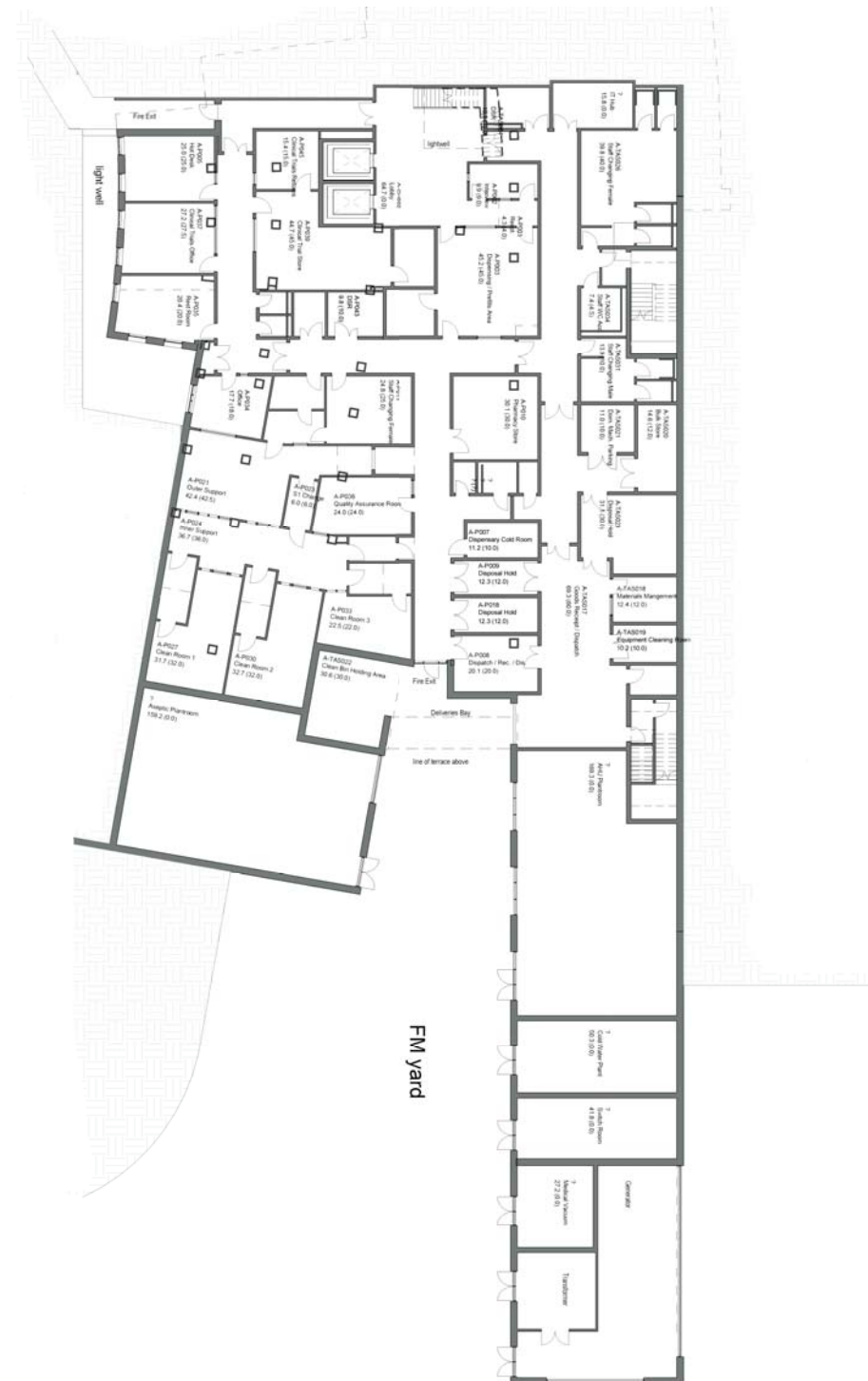


Strong graphics and pure shapes and colours in artwork, decoration and lighting

Connection to Outdoor Space



Abundant daylight, geometric patterns, minimal use of colour



Anchor LG Floor
Interior Strategy

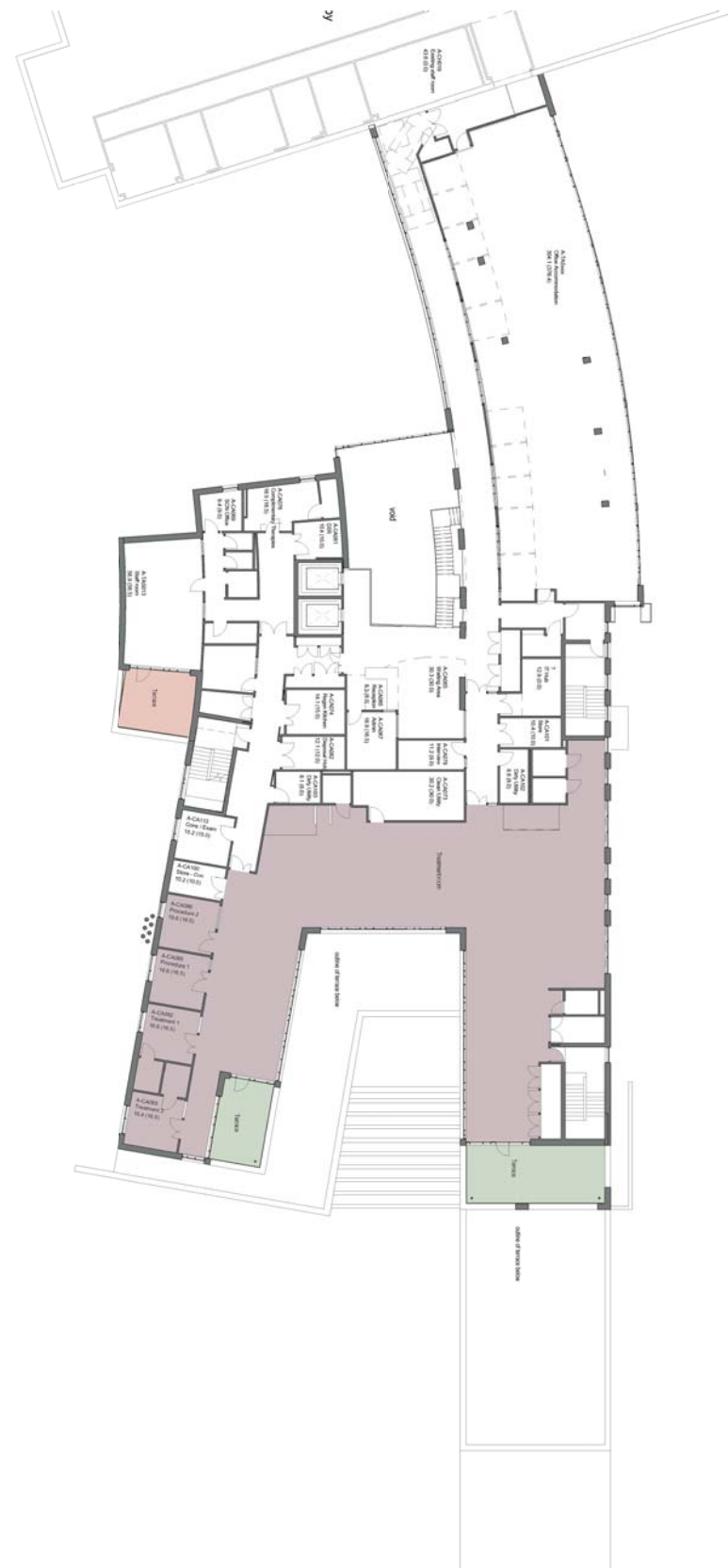
- Contemporary Hospitality
- Traditional Domestic
- Modern Clinical
-
- Garden - possible patient area
- Staff Accessible Garden
- Maintenance Access
- Privacy Line



Anchor Ground Floor
Interior Strategy

- Contemporary Hospitality
- Traditional Domestic
- Modern Clinical

- Garden - possible patient area
- Staff Accessible Garden
- Maintenance Access
- Privacy Line

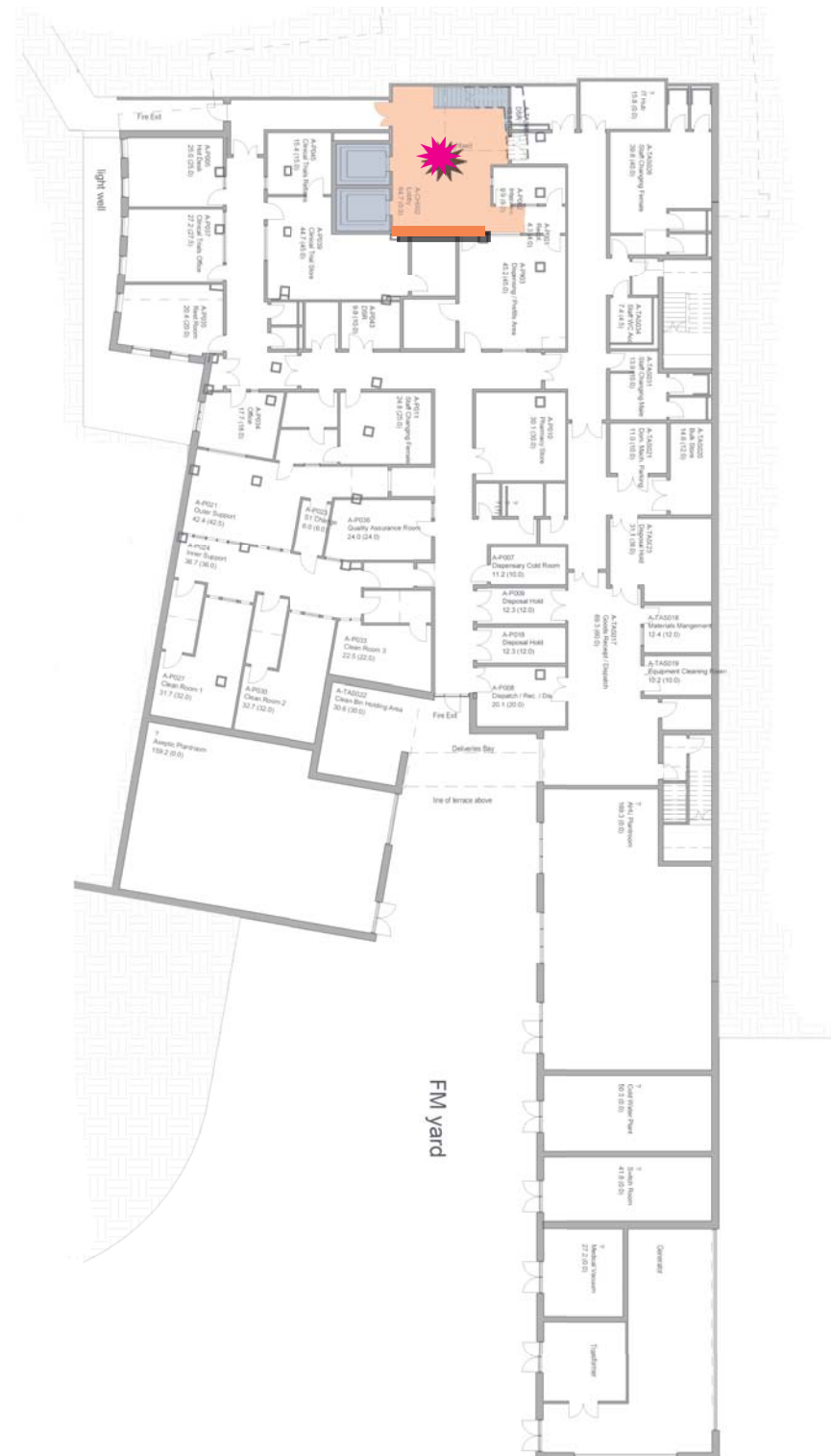


Anchor First Floor
Interior Strategy

- Contemporary Hospitality
- Traditional Domestic
- Modern Clinical















- Garden - possible patient area
- Staff Accessible Garden
- Maintenance Access
- Privacy Line

3.0 Wayfinding Strategy

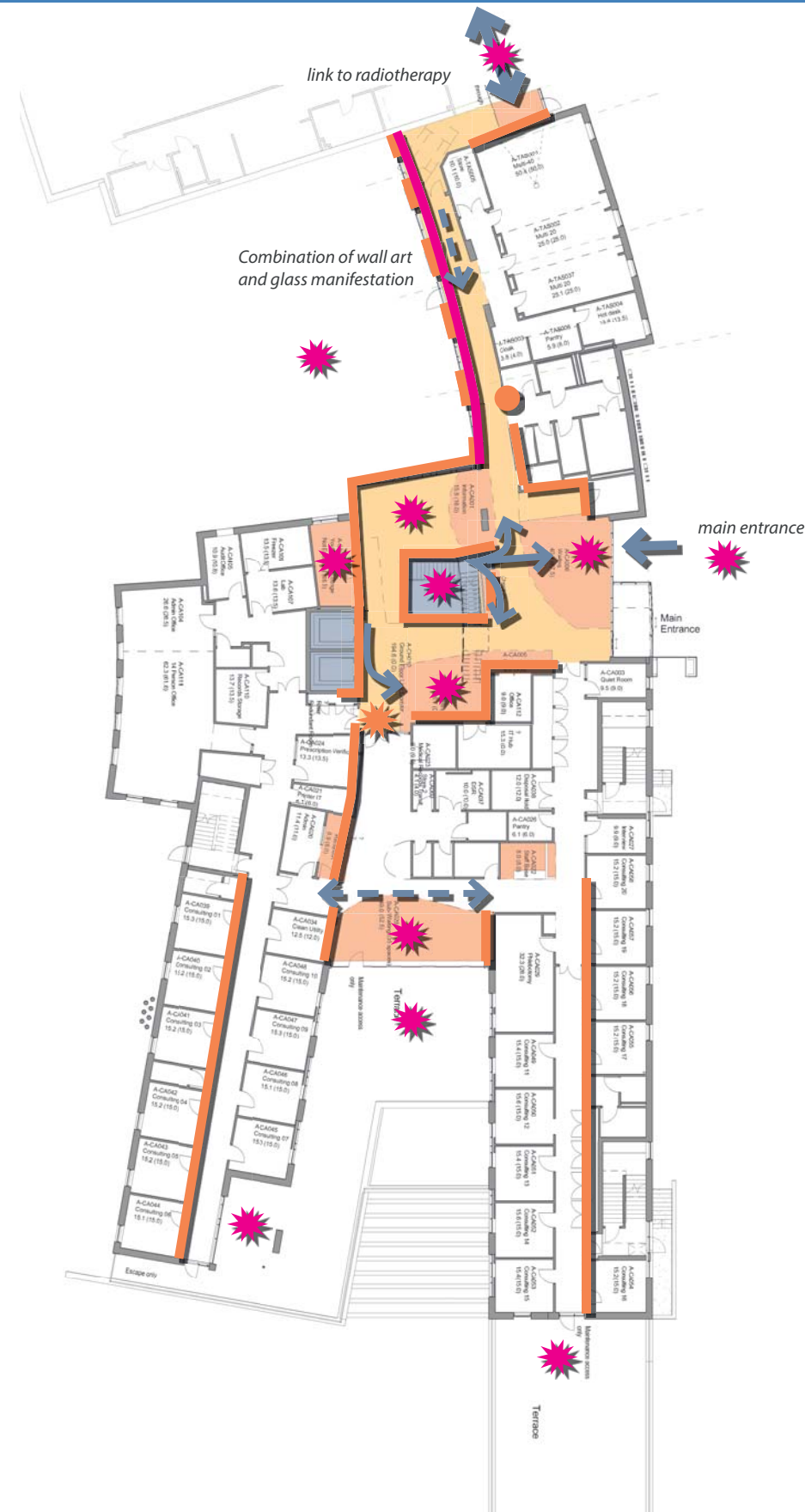


ANCHOR LG Floor

Features & Wayfinding

-  Standard Areas
-  Uplift Areas
-  Feature Areas
-  Lighting Uplift Areas
-  Feature Public Lifts & Stairs
-  Bed Lifts
-  FM Lifts
-  Wall Art
-  Art Feature Areas
-  Main Patient Flow
-  Secondary Patient Flow
-  Feature Wall
-  Main Wayfinding Node
-  Secondary Wayfinding Node

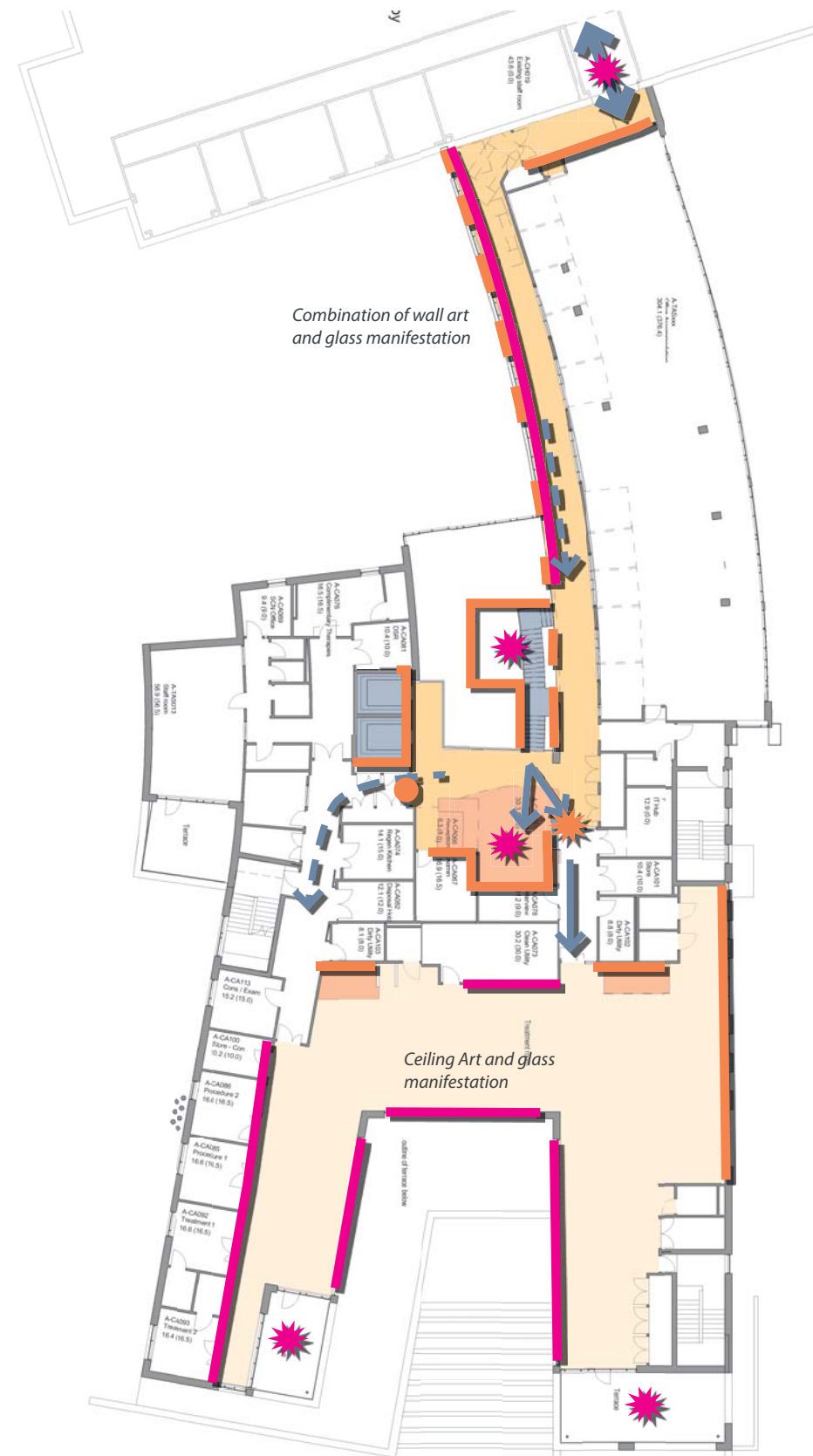
3.0 Wayfinding Strategy



ANCHOR Ground Floor Features & Wayfinding

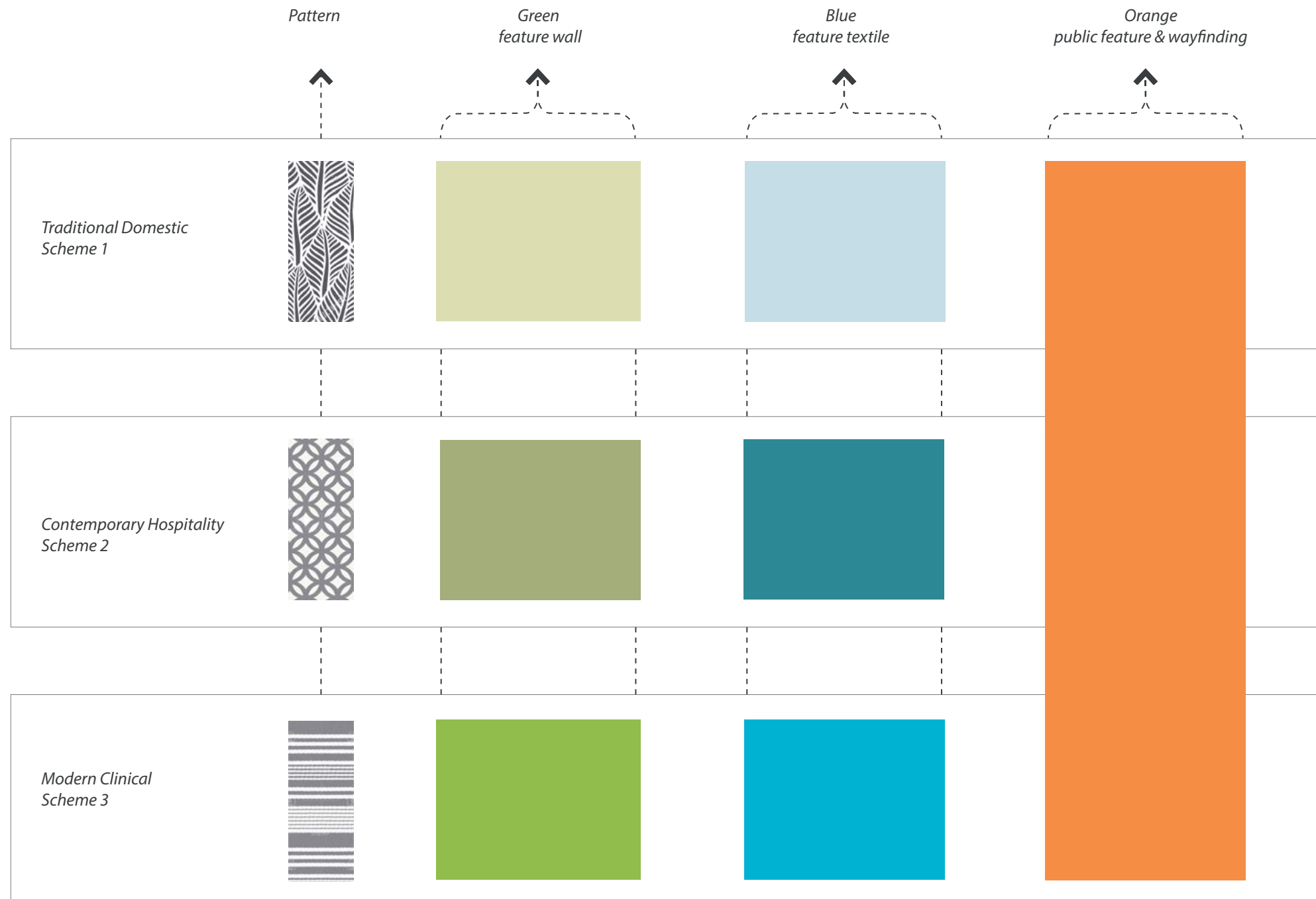
- Standard Areas
- Uplift Areas
- Feature Areas
- Lighting Uplift Areas
- Feature Public Lifts & Stairs
- Bed Lifts
- FM Lifts
- Wall Art
- Art Feature Areas
- Main Patient Flow
- Secondary Patient Flow
- Feature Wall
- Main Wayfinding Node
- Secondary Wayfinding Node

3.0 Wayfinding Strategy



ANCHOR First Floor
Features & Wayfinding

- Standard Areas
- Uplift Areas
- Feature Areas
- Lighting Uplift Areas
- Feature Public Lifts & Stairs
- Bed Lifts
- FM Lifts
- Wall Art
- Art Feature Areas
- Main Patient Flow
- Secondary Patient Flow
- Feature Wall
- Main Wayfinding Node
- Secondary Wayfinding Node



ANCHOR Colour Strategy

The Baird Family Hospital scheme uses three primary colours - green, blue & orange - as features and accents throughout. All three 'interior schemes' utilize same orange as a wayfinding & feature tool, while the green & blue colourways shift.

The 'traditional domestic' scheme pairs nature-inspired patterns with the softest colourway, the 'contemporary hospitality' scheme pairs geometric patterns with more lively colourway, and the 'modern clinical' scheme pairs simple patterns with the boldest colourway.

Orange is reserved for wayfinding & feature areas in public zones & corridors (feature wall, feature door, feature textile), blue is used as a vertical feature (bedhead joinery, wallcovering), and pink is used as a feature textile colour.

All three colour schemes are anchored by a neutral set of base materials. These neutral materials are applied to items such as floors, and non-feature walls & joinery.

4.0 Colour Strategy & Material Palettes

FLOORS



ANCHOR Look & Feel

Neutral Palette All Concepts

F11 - Vinyl, Public Areas

F12 - Vinyl, Private Areas

F13 - Carpet Tile

F14 - Rubber Sheet

F15 - Anti Slip Vinyl

F16 - Wet Room Vinyl

F17 - Porcelain Tile

JOINERY



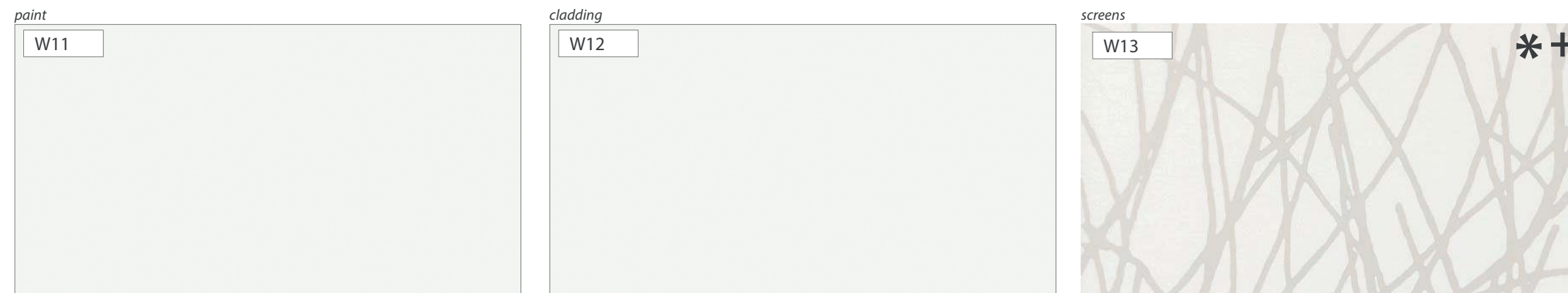
J11 - High Pressure Laminate, Timber Effect

J12 - High Pressure Laminate

J13 - Timber Veneer

J14 - Solid Surface

WALLS



W11 - Wall Paint

W12 - PVC Cladding (Wall & IPS)

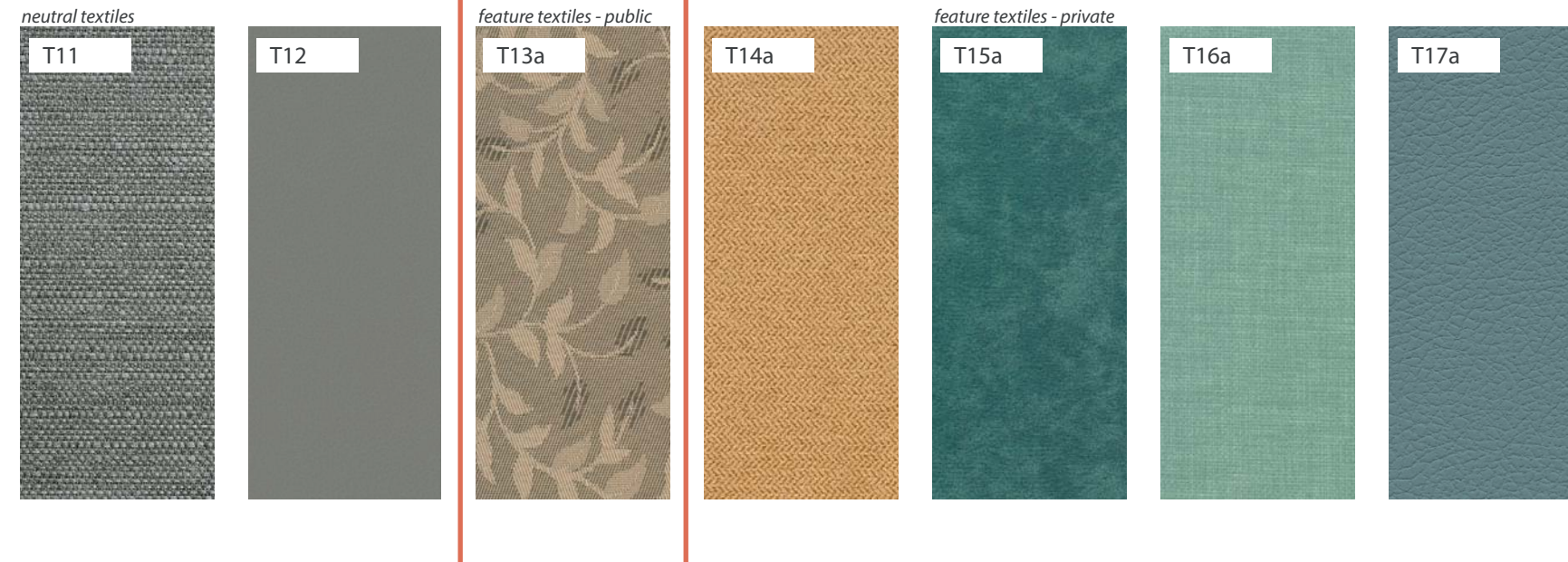
W13 - Privacy screen, resin or manifestation to glass

* Feature

+ Uplift

4.0 Colour Strategy & Material Palettes

TEXTILES



ANCHOR Look & Feel

Feature Palette Traditional Domestic

T11 - Neutral Texture

T12 - Neutral Solid

T13a - Public Pattern - *

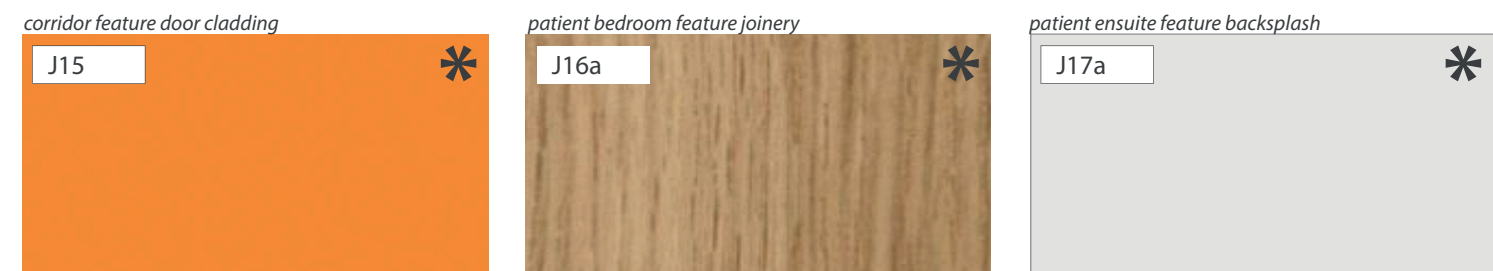
T14a - Public Solid - Agua Nova Saffron

T15a - Private Pattern - *

T16a - Private Texture - Agua Linetta Duck Egg

T17a - Private Solid - Ultrafabrics Mineral

JOINERY



J15 - High Pressure Laminate

J16a - Timber Effect HPL

J17a - Back Painted Glass

WALLS



W14 - Vinyl Wallcovering

W15 - Wall Paint

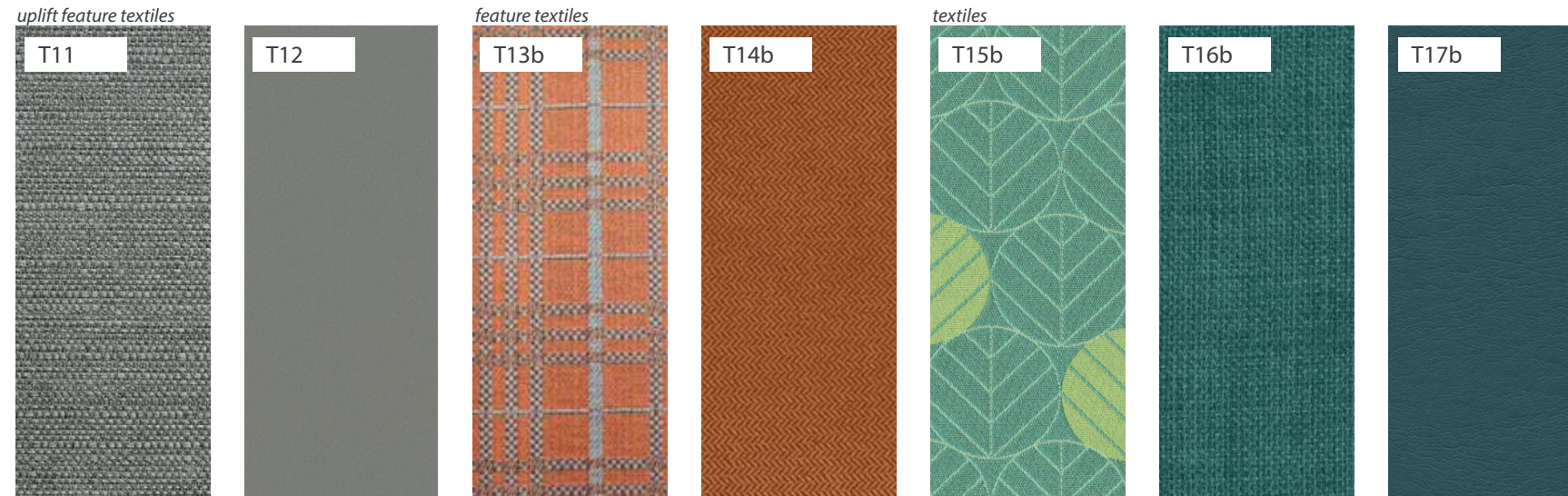
W16a - Vinyl Wallcovering private

W17a - Wall Paint private

* Feature

+ Uplift

TEXTILES



ANCHOR Look & Feel

Feature Palette Contemporary Hospitality

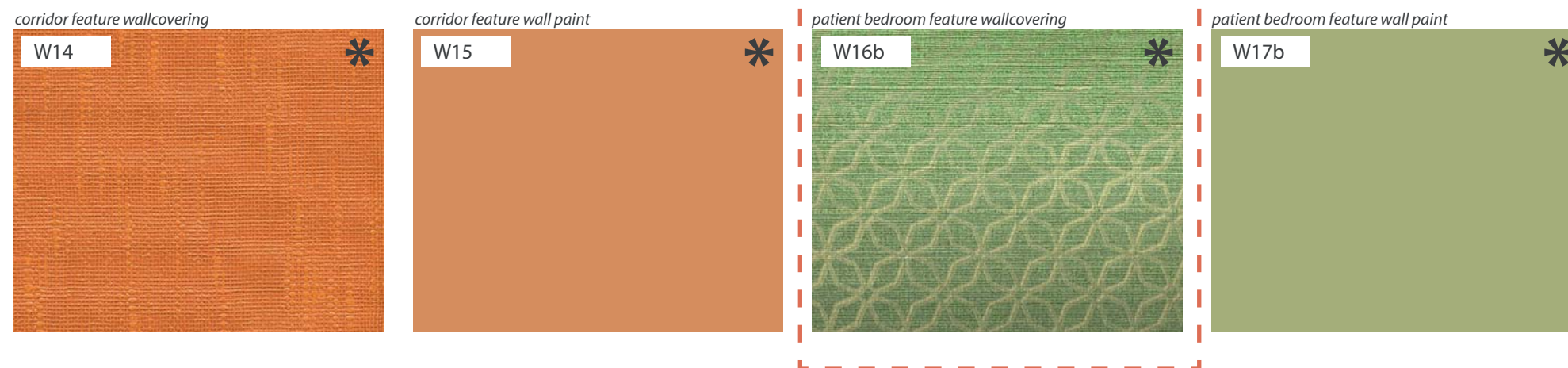
- T11 - Neutral Texture
- T12 - Neutral Solid
- T13b - Public Pattern - Sunbury Mardale Cadmium
- T14b - Public Solid - Agua Noca Burnt Orange
- T15b - Private Pattern - *
- T16b - Private Texture - Agua Linetta Teal
- T17b - Private Solid - Ultrafabrics Coastal

JOINERY



- J15 - High Pressure Laminate
- J16b - High Pressure Laminate
- J17b - Back Painted Glass

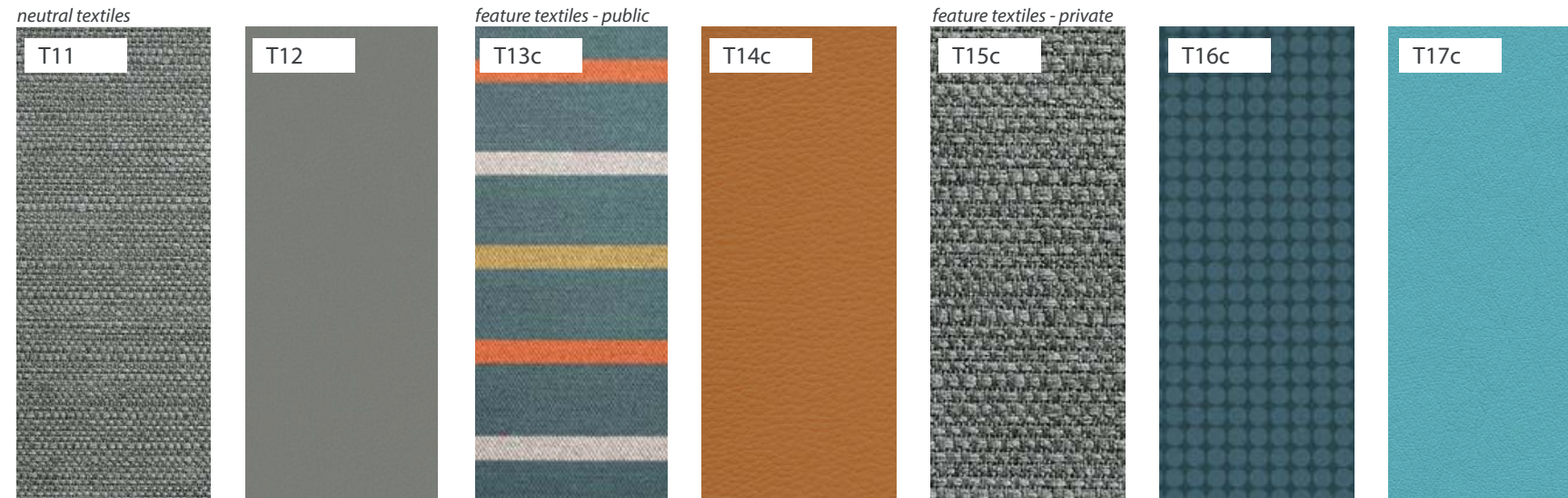
WALLS



- W14 - Vinyl Wallcovering
- W15 - Wall Paint
- W16b - Vinyl Wallcovering private
- W17b - Wall Paint private

* Feature
+ Uplift

TEXTILES

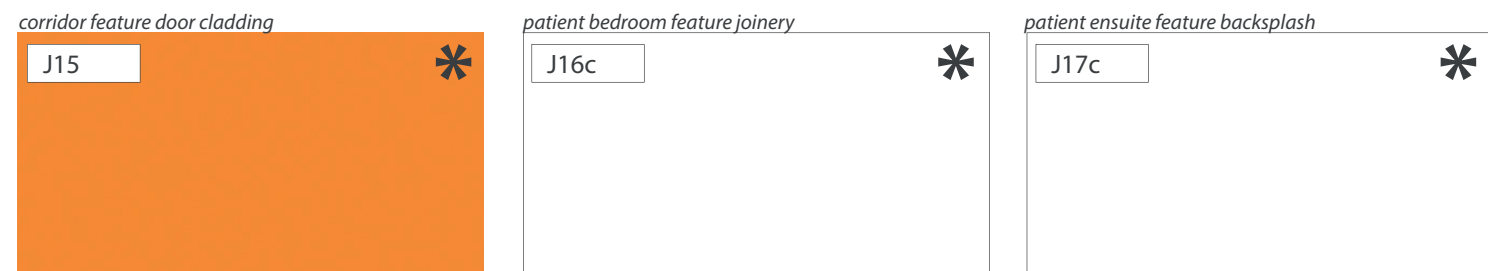


ANCHOR Look & Feel

Feature Palette Modern Clinical

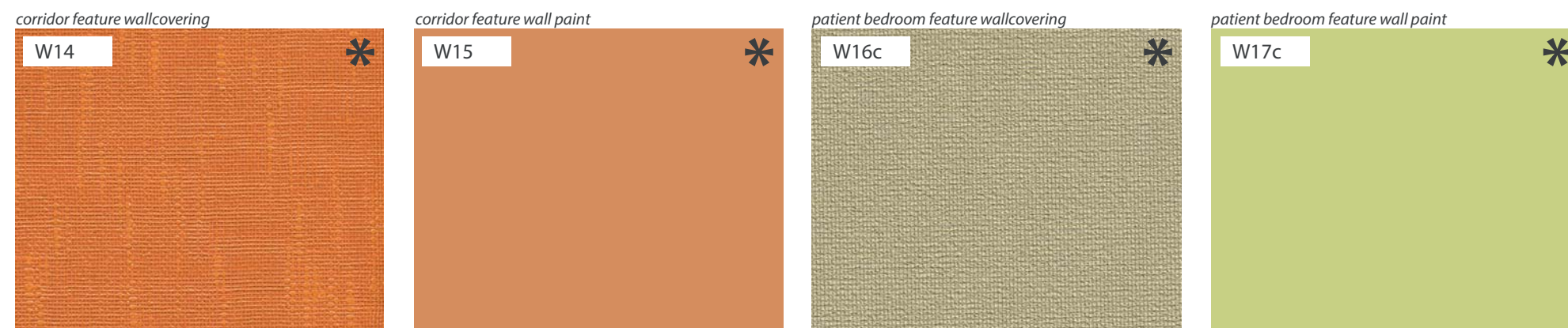
- T11 - Neutral - Texture
- T12 - Neutral - Solid
- T13c - Public Pattern - Sunbury Lingdale Sea
- T14c - Public Solid - Agua Aries Tangerine
- T15c - Private Pattern - *
- T16c - Private Texture - *
- T17c - Private Solid - Ultrafabrics Lagoon

JOINERY



- J15 - High Pressure Laminate
- J16c - High Pressure Laminate
- J17c - Back Painted Glass

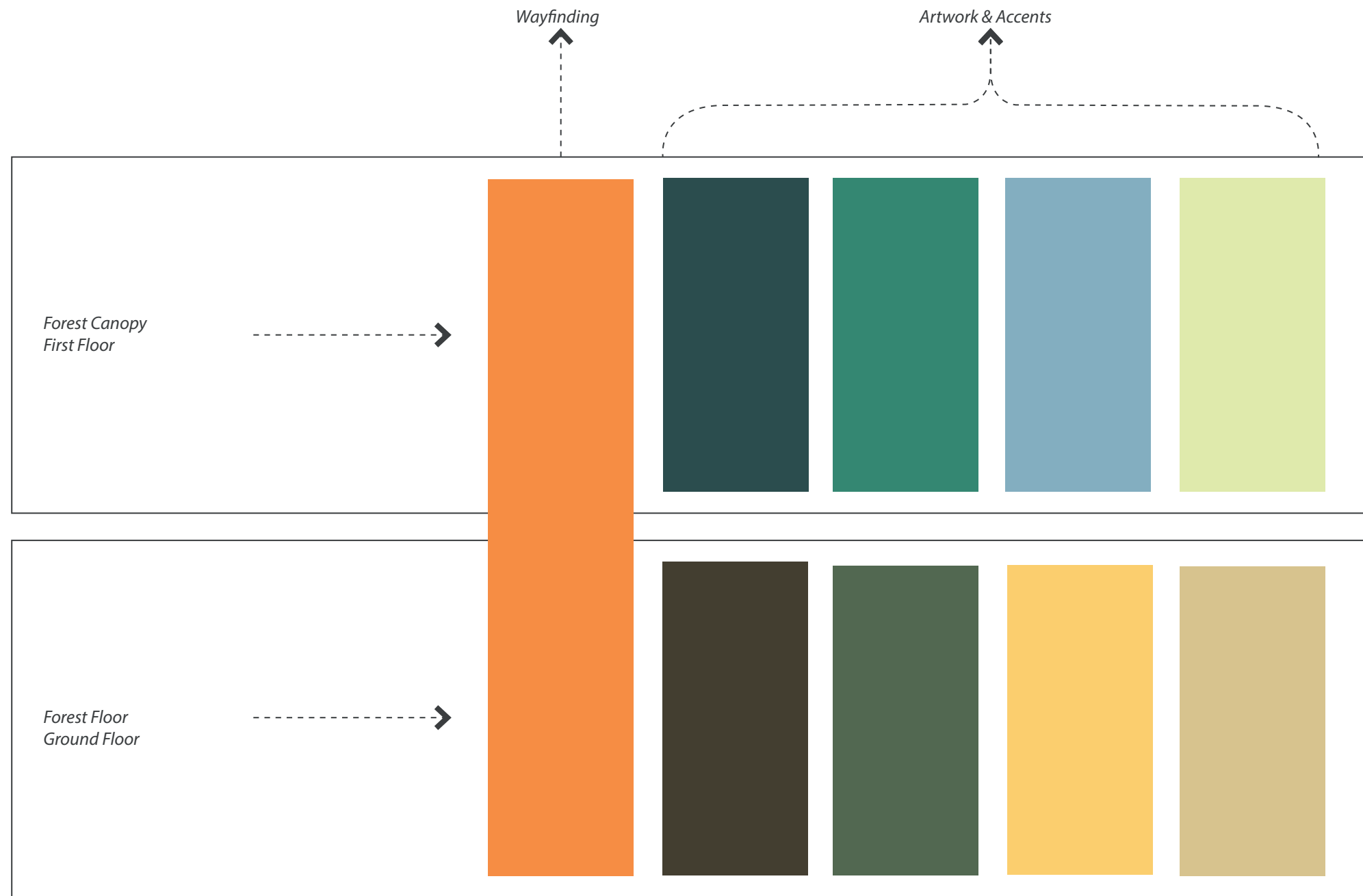
WALLS



- W14 - Vinyl Wallcovering
- W15 - Wall Paint
- W16c - Vinyl Wallcovering private
- W17c - Vinyl Wallcovering private

- * Feature
- + Uplift

5.0 Wayfinding & Artwork Palette



5.0 Wayfinding & Artwork Palette

GF Wayfinding & Artwork *'Forest floor' Colour Accent*



FF Wayfinding & Artwork *'Forest canopy' Colour Accent*

